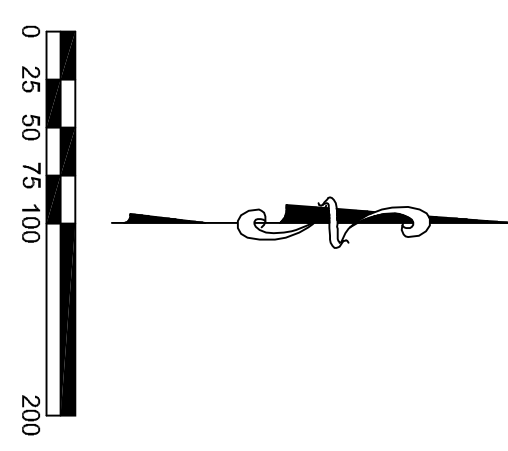
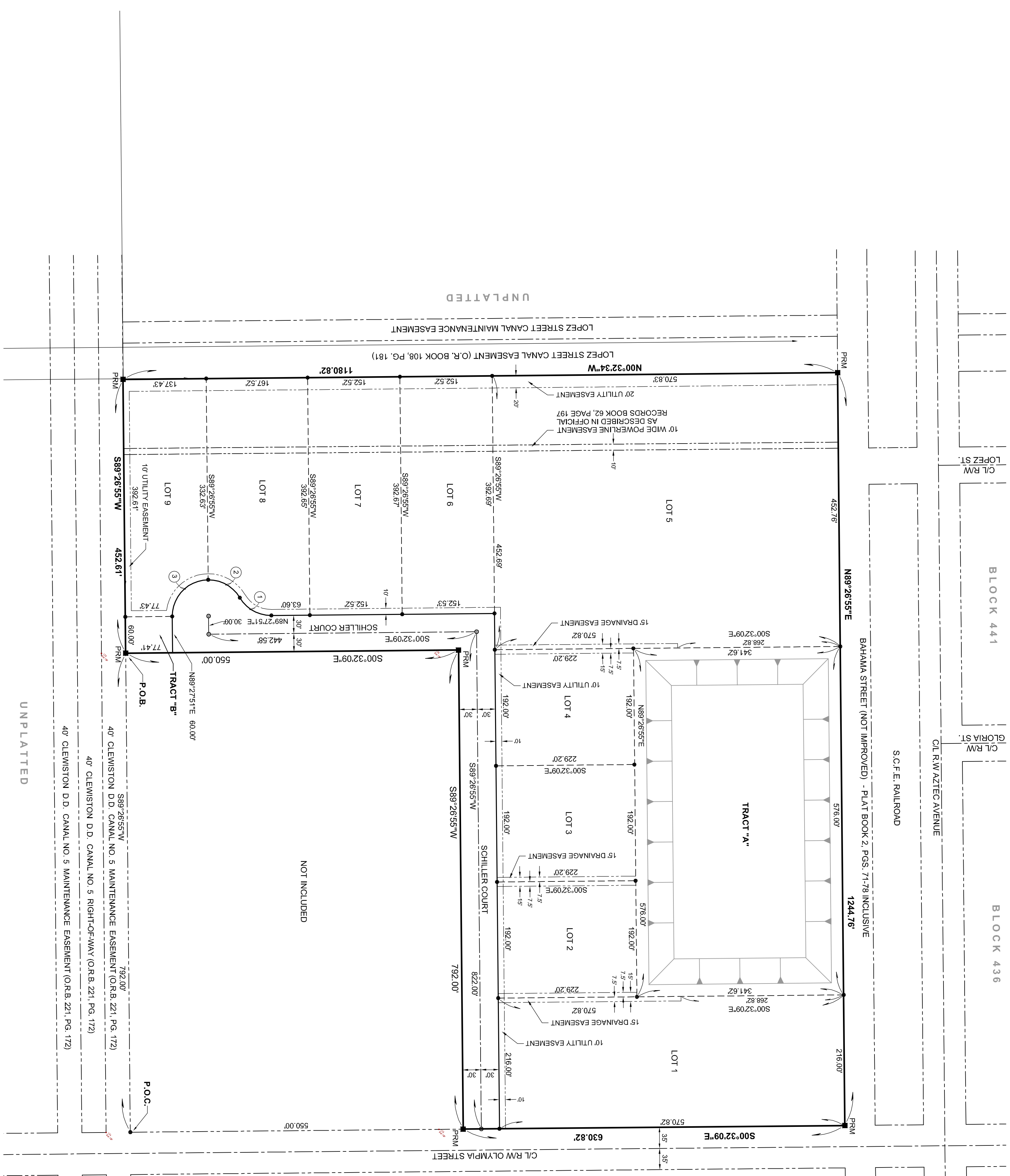


"CLEWISTON COMMERCE PARK"

AN INDUSTRIAL SUBDIVISION

LYING IN SECTION 16, TOWNSHIP 43 SOUTH,
RANGE 34 EAST, CITY OF CLEWISTON, HENDRY COUNTY, FLORIDA.

PLAT BOOK _____
PAGE _____



- ABBREVIATIONS**
- C.A. = CENTRAL ANGLE
 - C.B. = CHORD BEARING
 - D.D. = DRAINAGE DISTRICT
 - I.P. = 1/2" IRON PIN WITH YELLOW CAP
 - N.G.V.D. = NATIONAL GEODETIC VERTICAL DATUM OF 1929
 - O.R. = ORIGINAL RECORD
 - P.O.B. = POINT OF BEGINNING
 - P.O.C. = POINT OF COMMENCEMENT
 - P.C.P. = PERMANENT CONTROL POINT
 - PRM = (PK NAIL & DISK 'I.P.A. 1B-1042') PERMANENT REFERENCE MONUMENT (4" X 4" CONCRETE MONUMENT WITH ALUMINUM DISK STAMPED "P.R.M. 1B1042")
 - P.S.M. = PROFESSIONAL SURVEYOR AND MAPPER
 - RAD = RADIUS
 - (R) = RIGHT-OF-WAY
 - (R) = RADIAL
 - (NR) = NON-RADIAL
 - (R) = DESIGNATION OF ALL CURVE DATA

CURVE TABLE			
CURVE	ARC	RADIUS	C.A.
1	62.83'	60.00'	60°00'00"
2	62.85'	60.00'	60°00'57"
3	94.23'	60.00'	89°58'03"

SHEET 2 OF 2

JOHNSON - PREWITT & ASSOCIATES, INC.
ENGINEERS • PLANNERS • LAND SURVEYORS
 STATE AUTHORIZATION NUMBER LB1042, EB1042
 P.O. BOX 1029 850 WEST VENTURA AVENUE CLEWISTON, FLORIDA PH: (863) 983-9188 FAX: (863) 983-9854
 www.johnsonprewitt.com

1:2025/07/24 10:02:00 AM C:\Users\jprewitt\OneDrive\Documents\Projects\1025\1025.dwg (10/2025) 10/2025